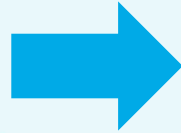


# Montezuma is now Element 25 Limited

Same company, different name...



Element 

The new logo for Element 25 Limited. It consists of the word 'Element' in a dark blue, sans-serif font, followed by the number '25' in a blue, sans-serif font. The '25' is enclosed within a blue circular arc that is open on the left side.

The Company's ASX ticker is now **E25**.

# Element 25 Limited Investor Update

Transitioning from a diversified explorer to the developer of a world class high purity manganese project to supply the battery revolution.

- June 2018



# Disclaimer

This presentation contains only a brief overview of Element 25 Limited and its associated entities (“Element 25”) and their respective activities and operations. The contents of this presentation, including matters relating to the geology of Element 25's projects, may rely on various assumptions and subjective interpretations which it is not possible to detail in this presentation and which have not been subject to any independent verification.

This presentation contains a number of forward-looking statements. Known and unknown risks and uncertainties, and factors outside of Element 25's control, may cause the actual results, performance and achievements of Element 25 to differ materially from those expressed or implied in this presentation.

To the maximum extent permitted by law, Element 25 does not warrant the accuracy, currency or completeness of the information in this presentation, nor the future performance of Element 25, and will not be responsible for any loss or damage arising from the use of the information.

The information contained in this presentation is not a substitute for detailed investigation or analysis of any particular issue. Current and potential investors and shareholders should seek independent advice before making any investment decision in regard to Element 25 or its activities.

# Corporate Overview

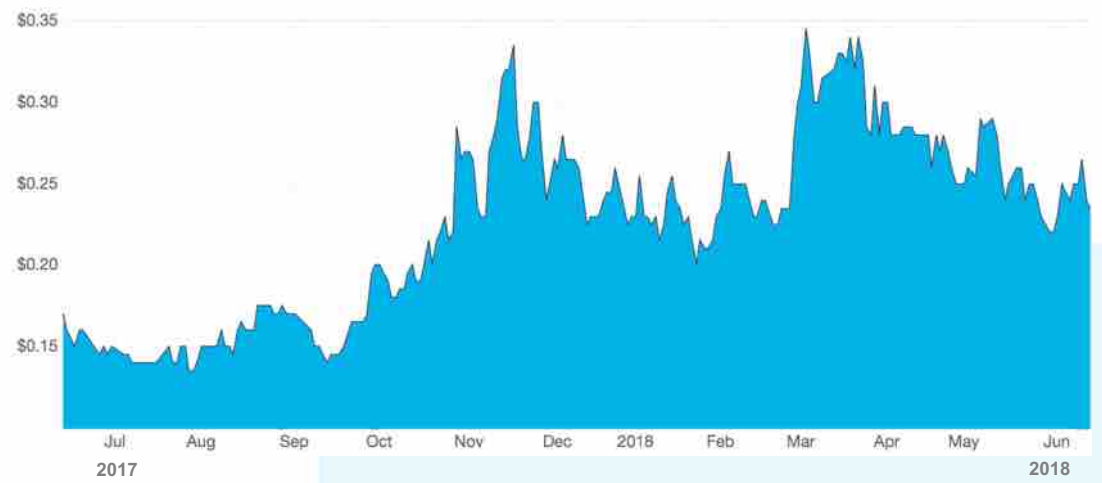
## Financial Information

ASX Ticker	E25
Shares on Issue	83.5M
Share Price	\$0.225
Market Capitalisation	\$18.8M
Cash & Investments ( at 31 March '18)	~\$10M
Debt	Nil
Enterprise Value	~\$8.8M
Top 20 Shareholders	~67%

## Board and Management

Seamus Cornelius	Chairman
Justin Brown	Executive Director
John Ribbons	Non Executive Director
Dave O'Neill	Exploration Manager

## Share Price Performance



## Major Shareholders

Top 20 Shareholders	67%
Board and Management	8.2%
JP Morgan Nominees Australia	11.4%
Duketon Mining Ltd	6.5%

The background of the slide is a close-up photograph of a rock surface, showing various textures and colors ranging from dark grey to light grey. A semi-transparent blue rectangular overlay is positioned on the left side of the image, containing the title text.

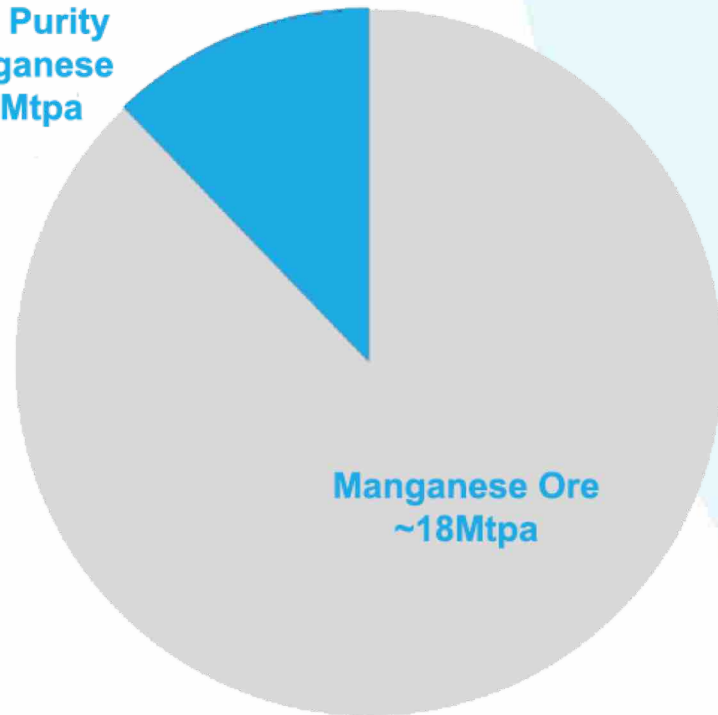
# High Purity Manganese

A hidden opportunity within the world's fourth largest metal commodity segment.

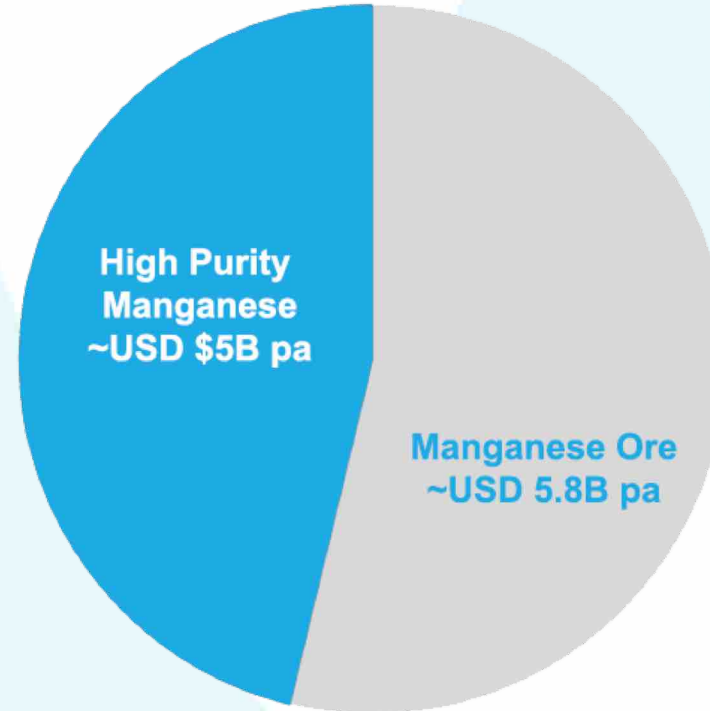
# What is High Purity (Class 1) Manganese?

- High purity manganese is a premium product segment.
- It makes up about 14% of the global manganese market by volume; but
- It makes up about 40% of the global manganese market by value.

High Purity  
Manganese  
~2.5 Mtpa



High Purity  
Manganese  
~USD \$5B pa



Three main products:

- Electrolytic Manganese Metal (“EMM”)
- Electrolytic Manganese Dioxide (“EMD”)
- Manganese Sulphate

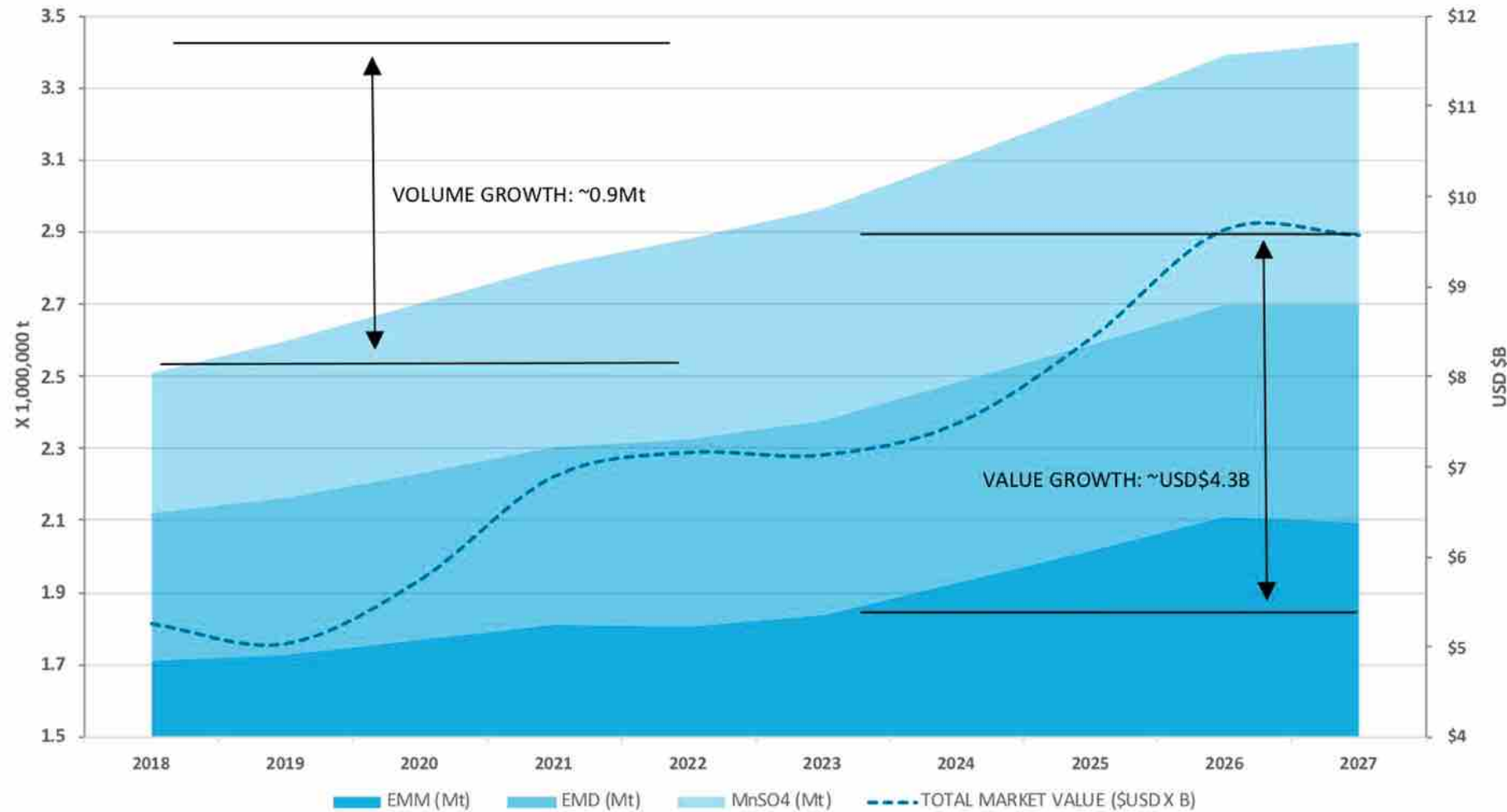
Main uses:

- Li-ion batteries
- Series 200 stainless steel
- Specialty alloys
- Fertiliser and trace nutrient



# High Purity Manganese Market Forecast = Strong Growth

25



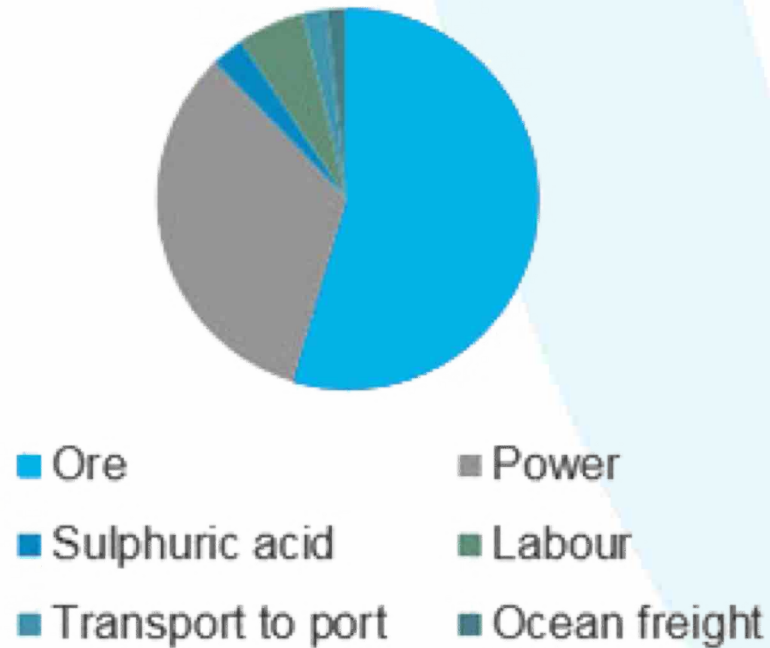
Reference: Metal Bulletin Commissioned Manganese Market Report April 2018

# Costs Are Going Up in China

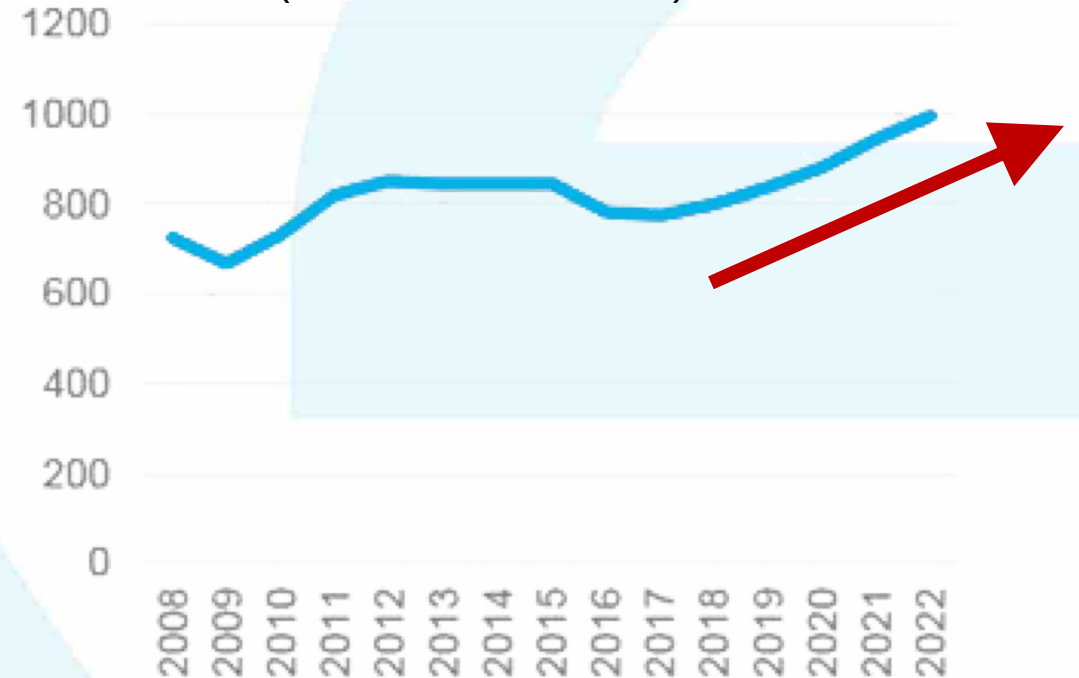
And... quality domestic ore supplies are largely exhausted...

25

Average End-Product Cost Breakdown of Chinese EMM Plants



Average Chinese EMM Costs Over Time (\$/t before ore costs)



Reference: <https://www.crugroup.com/knowledge-and-insights/spotlights/2018/manganese-metal-price-hikes-a-storm-in-a-teacup/>



The background of the slide is a close-up photograph of a rock face, possibly a cave wall or a geological outcrop. The rock has a complex, layered texture with various shades of blue and grey. A bright blue rectangular box is overlaid on the left side of the image, containing the main title in white text.

# World Class Manganese Resource

Australia's largest onshore manganese resource is ripe for development

# The Butcherbird Manganese Project

- Australia's largest onshore manganese deposit.
- >180 Mt of manganese ore\*.
- Excellent local infrastructure.
- 100% owned by Element 25 Limited.
- Low risk mining jurisdiction.
- Mining Lease Application lodged February 2018.
- Scoping Study completed.
- Pre Feasibility Study Commenced.

\*Reference: Element 25 Limited ASX release dated 12 October 2017 (originally released under the MZM ticker code).



# World Class Manganese Resource

25

Prospect	Tonnes (Mt)	Mn (%)	SiO <sub>2</sub> (%)	Fe (%)	P <sub>2</sub> O <sub>5</sub> (%)	Al <sub>2</sub> O <sub>3</sub> (%)
<b>Yanneri Ridge</b>						
Inferred	48.0	10.7	43.0	11.1	0.262	10.7
Indicated	22.5	12.0	43.8	11.6	0.297	10.6
<b>Additional Deposits</b>						
Inferred	110.3	10.6	44.4	11.9	0.3	11.0
<b>Total</b>	<b>180.8</b>	<b>10.8</b>	<b>43.9</b>	<b>11.7</b>	<b>0.3</b>	<b>10.9</b>

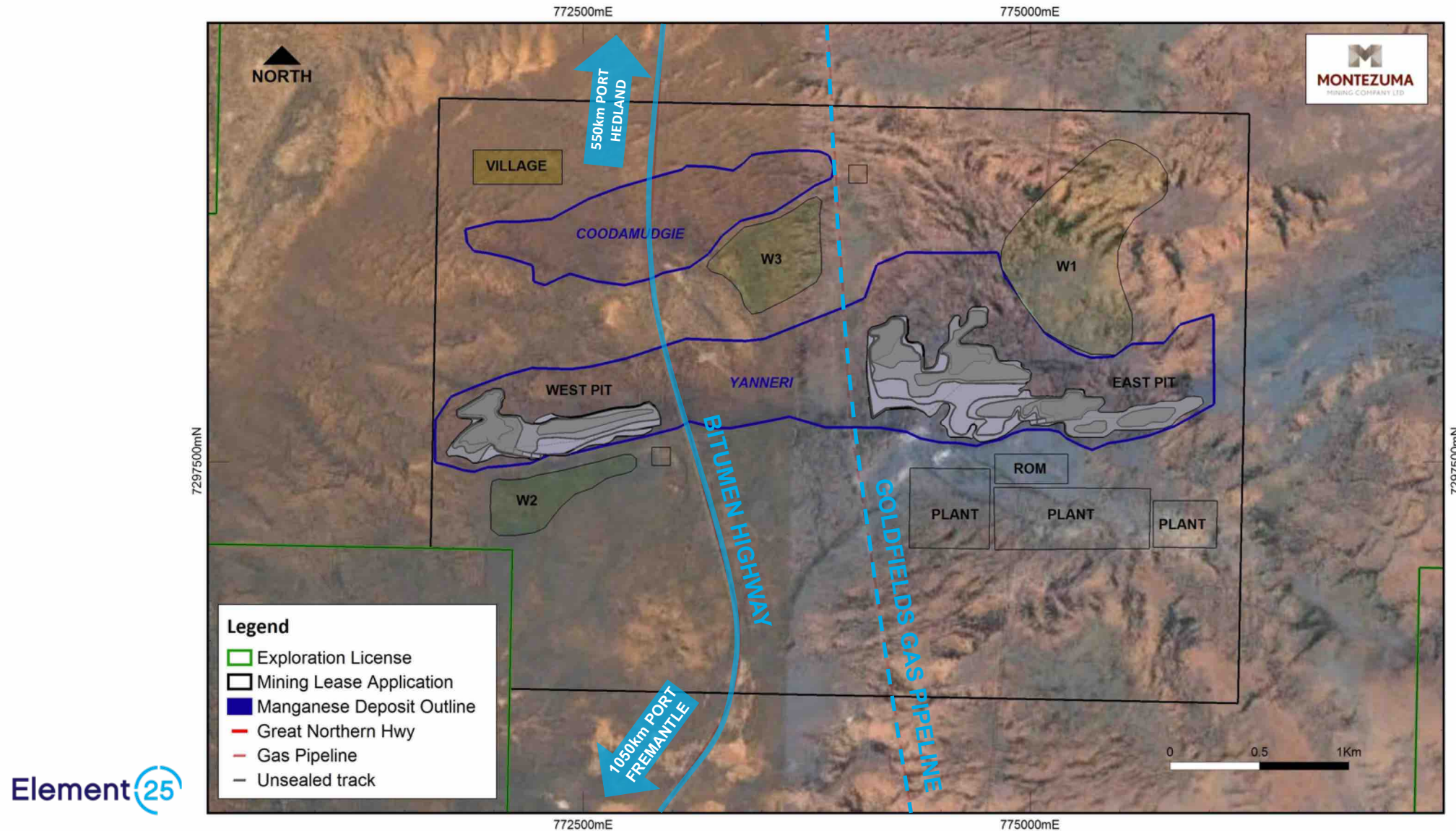
- Inferred and Indicated Resource Estimates completed for eight deposits.
- Significant potential remains to increase the resource with further drilling.
- Scale of development not resource constrained.

Reference: Element 25 Limited ASX release dated 12 October 2017 (originally released under the MZM ticker code)



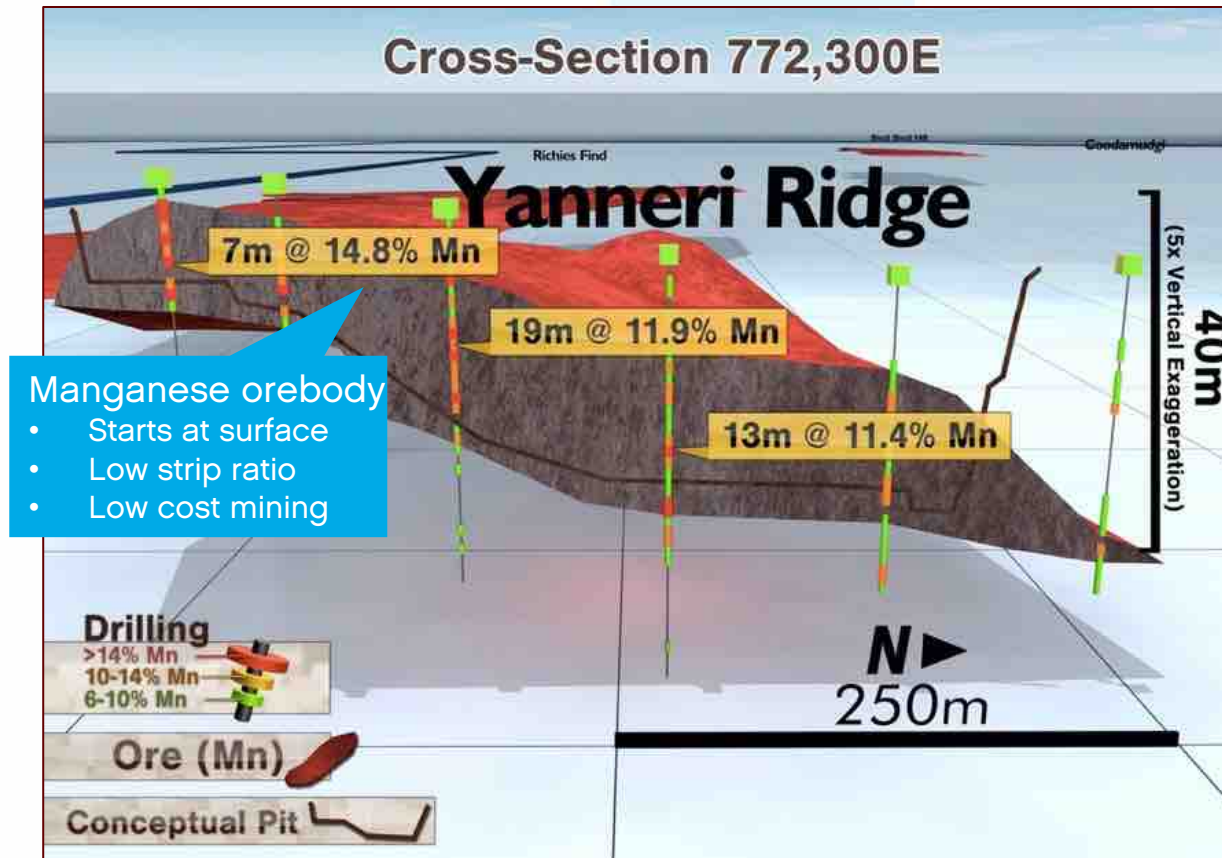
# Great Infrastructure Endowment

25



# Simple Geology

25



- Flat lying stratiform ore body, very simple geology.
- Ore zone starts at surface and is laterally continuous.
- No selective mining required.
- Low strip ratio of 0.2:1 based on preliminary pit optimisations.
- Ore zone is above the water table.

Note: All intersections are approximately true width

The background of the slide is a close-up photograph of a marbled surface, possibly stone or marble, with swirling patterns of light and dark grey. A solid blue rectangular overlay is positioned on the left side of the image, containing the title text.

# A Unique Processing Pathway

“Every once in a while, a new technology, an old problem, and a big idea turn into an innovation.”

**Dean Kamen, Inventor.**



# Breakthrough Technology

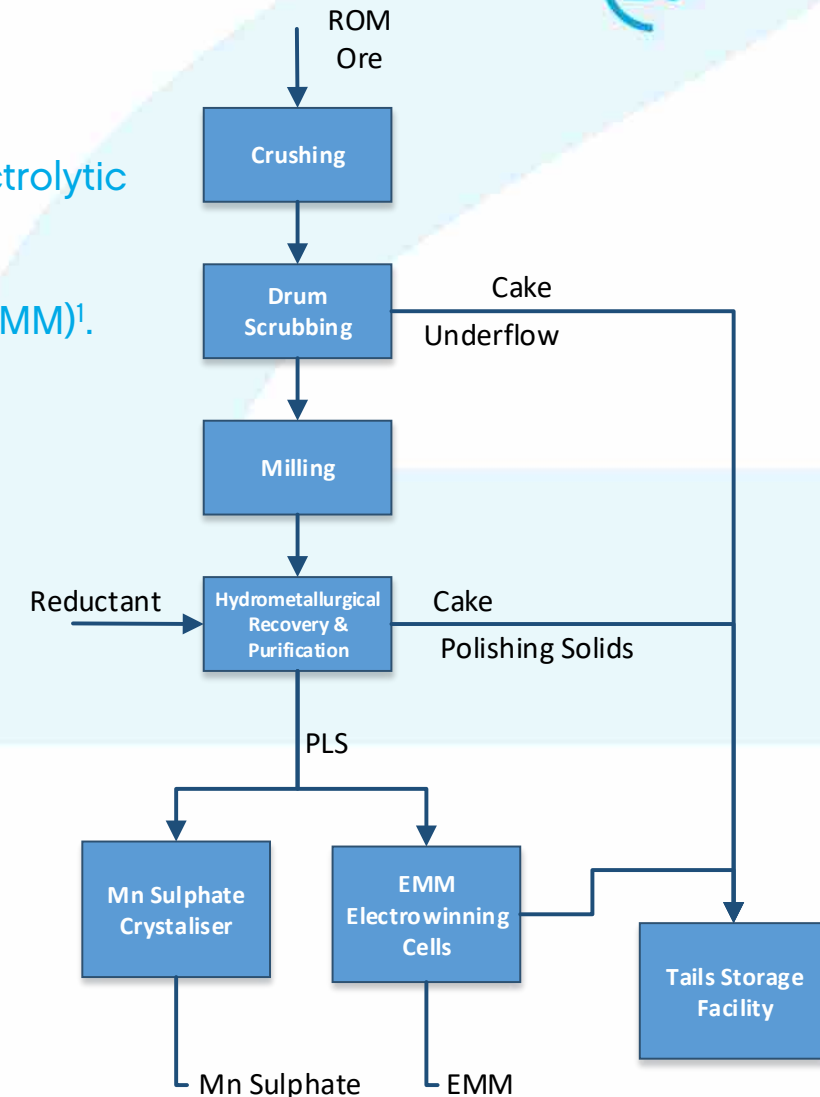
- CSIRO-developed flowsheet produces high purity battery grade manganese.
- Potential products include manganese sulphate for NMC Li-Ion Batteries, Electrolytic Manganese Dioxide (“EMD”) and Electrolytic Manganese Metal (“EMM”).
- High purity manganese is a high value product which sells for ~USD\$2,250/t (EMM)<sup>1</sup>.



LOW COST PLANT FEED FROM 100% OWNED MANGANESE RESOURCE



HIGH PURITY PRODUCTS FOR Li-Ion BATTERIES, HIGH VALUE: >US\$2000/t<sup>1</sup>



<sup>1</sup><https://www.metalbulletin.com/My-price-book.html?price=34473>

# Key Differentiators



Current Production Methods (China & SA)	Element 25 Flowsheet
<ul style="list-style-type: none"><li>• Requires high grade imported manganese ore or very low grade domestic ore – both expensive.</li><li>• Reduction Roasting to 800-1,000°C (for oxide ores) consumes energy.</li><li>• Sulphuric acid leach.</li><li>• Potentially more complex purification.</li><li>• Production of final products using toxic selenium.</li></ul>	<ul style="list-style-type: none"><li>• Lower cost ore mined at surface.</li><li>• Fast leach at ambient temperature and atmospheric pressure.</li><li>• Exothermic reaction produces energy.</li><li>• No sulphuric acid plant.</li><li>• Simple, novel purification pathway.</li><li>• Purified solution can produce EMM, EMD or manganese sulfate for Li-Ion batteries.</li></ul>
High emission, high energy, high cost, old technology	Lower emissions, lower energy, lower cost disruptive new technology



# Next Steps for Element 25?

Scoping Study complete and positive. What is the pathway to development...

# Scoping Study Completed, PFS Underway

## KEY FACTORS FOR OPTIMISATION:

- **SCALE:** Very large resource means optimal scale is not limited by resource size. Study will assess production volumes from 100Kt (potential mine life ~180 years) to 1Mt (potential mine life ~18 years).
- **POWER SOLUTION:** Electro-winning is a heavy power consumer so power cost is a significant input. Gas pipeline provides robust base case. Renewable penetration and optimisation to drive costs down.
- **LOGISTICS:** Scoping Study assumes products to be shipped in containers via Fremantle. PFS work will investigate Port Hedland to reduce haulage costs.
- **MINING:** Simple geology expected to mean low cost and low sensitivity to overall operating costs.
- **MARKETING:** Product selection (EMM, EMD and  $\text{MnSO}_4$ ) and price forecasts are key factors.
- **CAPEX/OPEX:** Capital intensity will reduce at larger scales. Optimal startup size to be worked out.

# Preliminary Project Timeline Estimate

Scoping Study ✓

Decision to proceed to PFS

PFS

Decision to proceed to FS

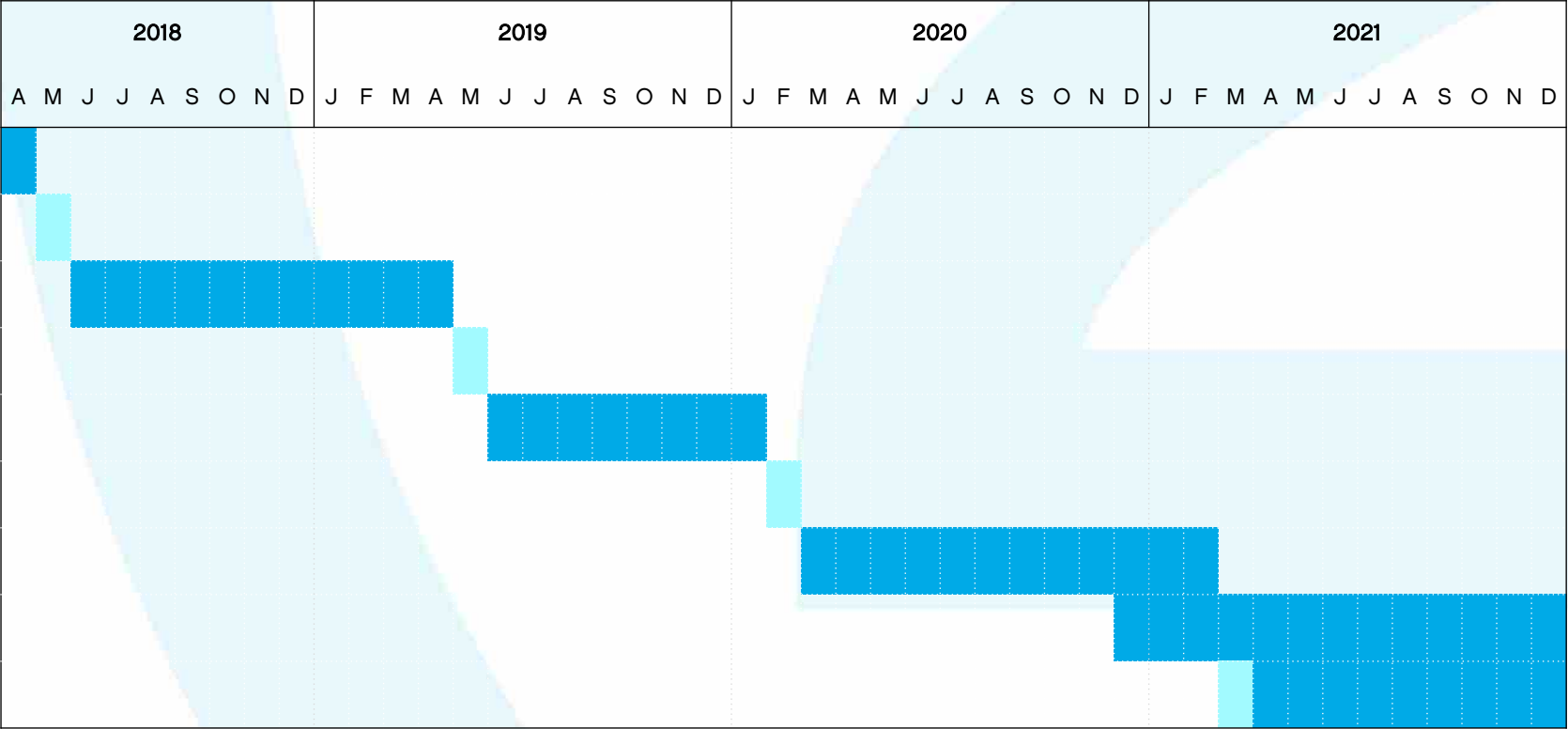
FS

Decision to proceed to Construct

Construct

Commence Mining

Commence Operations



Estimated Project Costs



# Conclusion - why invest?

25

- World class, very large manganese deposit makes the project eminently scalable.
- Technology breakthrough on processing.
- Simple geology and flowsheet reduces technical risk.
- Strong demand growth forecast from conventional end users and the battery revolution.
- Multiple competitive advantages including low cost, long mine life, scalability and environmental credentials.
- Scoping Study to assess project economics positive and robust.
- Strong balance sheet, low market capitalisation and enterprise value, tight capital structure.
- The only current ASX listed opportunity in this sector.
- **Those who recognize the opportunity early will potentially benefit the most...**





# Thank you.

For more information, please contact Element 25 Limited:

+61 6315 1400

[admin@e25.com.au](mailto:admin@e25.com.au)

[www.element25.com.au](http://www.element25.com.au)

Element<sup>(25)</sup>

# Competent Person's Statement

Note: The information in this presentation that relates to Exploration Results, Exploration Targets and Mineral Resources is based on information compiled by Mr Justin Brown who is a full-time employee of the Company and is a member of the Australasian Institute of Mining and Metallurgy.

Justin Brown has sufficient experience which is relevant to the style of mineralisation and type of deposit under consideration and to the activity which he is undertaking to qualify as a Competent Person as defined in the 2012 Edition of the 'Australasian Code for Reporting of Exploration Results, Mineral Resources and Ore Reserves'. Justin Brown consents to the inclusion in the report of the matters based on his information in the form and context in which it appears.

Please note with regard to exploration targets, the potential quantity and grade is conceptual in nature, that there has been insufficient exploration to define a Mineral Resource and that it is uncertain if further exploration will result in the determination of a Mineral Resource.

All references to Mineral Resources pertain to the ASX release dated 12 October 2017. The Company confirms that all material assumptions, underpinning the estimations continue to apply and have not materially changed.

For further information on Element 25 Limited and its Projects please visit its website at [www.element25.com.au](http://www.element25.com.au) which contains copies of all continuous disclosure documents to ASX, Competent Persons' Statements and Corporate Governance Statement and Policies.